



CANNING SUPPLY NEW STOCKPILE CONVEYOR TO RMC MARINE

- Canning Conveyor Products
- Cannoflex Standard Conveyor Belting
- Cannoflex Chevron Belting
- Second Hand Conveyor Belting
- Conveyor Belt Fasteners
- Vulcanising
- Mobile Conveyors
- Lattice Frame Conveyors
- Feeders and Hoppers
- Conveyor Drums
- Idlers and Rollers
- New Replacement Rollers
- Field Conveyor Suspended Idlers & Rollers
- Canning Modular Conveyor C.M.C
- Field Conveyor Structure
- Slide Lagging
- Elevator Belts
- Wear Resistant Rubber
- Belt Reeling Machines
- Canning Conveyor Products



After recently completing a project involving the supply of a ship discharge conveyor for RMC Marine, Canning Conveyor have just completed a further element of the project in providing a new stockpile conveyor specifically built for the MV Sand Serin, this forms an essential part of the ship unloading system. Canning designed, manufactured and supplied a new 1500 mm wide x 19m drum centres troughed belt stockpile conveyor of lattice frame construction. This was designed to accept up to 1200 tonnes per/h of sea dredged sand and gravel from the new Sand Serin discharge conveyor and to elevate up at 20° before discharging to deposit a 10m high conical stockpile to ground (approx. 3400 tonnes). This conveyor complete with belt scraper was fitted with a 750mm full length, one side walkway and a maintenance platform around the head end, with access by a short stair.

Power was supplied from a 45kw drive unit and fitted with an emergency stop pull wire system to all accessible areas.

Canning Conveyor has also recently been awarded a contract to supply and fit a discharge conveyor to MV Welsh Piper for RMC Marine. This will follow on from the project on the sister vessel the Sand Serin.

The project calls for the design, detail and manufacture of a ship

discharge radial boom conveyor for the RMC MV Welsh Piper.

A new 1200mm wide x 16.5m drum centres troughed belt discharge radial boom conveyor will be supplied to discharge the ship at up to 1200 tonnes per hour based on a bulk density of 1.6 tonnes per cubic metre at a belt speed of 3.1 metres per second.

The conveyor boom will be fully fabricated, braced and stiffened and designed to accept material from the existing loading system via a loading hopper fabricated from 6mm thick mild steel plate, this will be stiffened with RSA sections and lined with 10mm thick low friction white Perplas on all sloping surfaces.

The boom will pivot at the tail end by means of two heavy duty machined pivot pins which will be mounted on two new pivot trunnions which are raised above deck as high as possible.

This boom will be raised and lowered by means of re-using the existing luffing winch which will be removed from its existing position and fitted to the new boom.

The conveyor slew will be controlled by a new internal type slewing ring which will be fitted to the new raised deck mounting. Slewing is driven by two hydraulic motors which will be powered by a power pack fitted into the engine room; this will be operated by levers fitted on the bridge.

RMC NATIONAL DEAL ON CONVEYOR COMPONENTS



RMC UK Procurement has reached agreement with several conveyor companies for the supply of conveyor components across the UK.

The deal provides RMC with national agreements on products, service levels and prices.

The vendors selected, were chosen on the range of products they provided, the service levels offered and the range of value added features and benefits offered to RMC.

The agreement covers six main areas: belting, vulcanising, scrapers, drums, idlers and slide lag. Two companies, one of which is Canning Conveyor have been selected to supply RMC with the full product range throughout the UK.

The business units of RMC now have national agreements which will provide 'best in class' service and value; these agreements will give RMC a big cost reduction in the conveyor spend category. This multi-source strategy also allows RMC to benchmark each of the selected vendors in 'real time'

The national agreements have significantly reduced the conveyor component vendor base for RMC and ensured an increased share of business for the selected vendors.

Canning Conveyor are delighted to have been chosen to supply RMC nationally and look forward to providing quality products and service whilst confirming their commitment and professional approach to this agreement.



TARMAC RENEW SUPPLIER CONTRACT WITH CANNING CONVEYOR

Canning Conveyor of Worksop have been awarded an annual renewal of the contract for the supply of conveyor belting, associated parts and services to the Tarmac Group. The contract specifies Canning Conveyor as the first-choice supplier for the Southern region, joint preferred supplier for the Central Region and Tarmac Concrete Products. Canning Conveyor have also been accepted as the preferred supplier of second-hand belting for all regions.

The Contract will include the supply of new and second-hand conveyor belting, vulcanising, belt fitting services, as well as ancillary products such as drums, belt scrapers, drum lagging and fasteners. Canning Conveyor will also be responsible for all site inspections and maintenance services.

TAKE A TRIP WITH CANNINGS



Canning Conveyor has recently designed and supplied an extension to the existing tripper conveyor system at Tarmac Northern's Cross Green Works. Fairport Engineering, Tarmac Northern's appointed managing contractor, worked closely with Canning Conveyor to ensure that this relatively small but vital part of the entire project was able to provide the most cost effective solution to the key issue of increasing the plant's ground storage capacity.

The Cross Green project has involved a major expansion to the facilities and products that Tarmac Northern is able to offer from its Leeds base. These include the establishment of new dry mortar and concrete plants to complement the existing asphalt plant. In order to allow all three plants to be adequately fed with raw materials the existing covered store needed to be extended. Three additional storage bays were added to the existing structure and the existing tripper conveyor was extended and uprated to suit this new arrangement.

The new conveyor system is capable of transporting 2000t/h of imported aggregates and uses a 1200mm wide belt running at 2.5m/s, which will thus provide sufficient capacity for the plant for many years to come. The conveyor extension of some 40m now means that the overall length of the tripper system is over 140m, which necessitated the uprating of the drive to 90kW.

To support Fairport's fast-track programme Cannings delivered the tripper extension to site in July 2003 after a design and manufacturing period of only 16 weeks. The extended system was successfully commissioned in August 2003 after an installation period of only 2 weeks. The early completion of the extended tripper system allowed Fairport to commission and hand-over the entire project to Tarmac ahead of the agreed target programme.



PLANT/SALES LIST 2004 Issued Spring 2004

All plant and equipment are currently available at the time of print but could be subject to remaining unsold. All prices quoted are in £ pounds sterling, all ex-works basis, or ex-site as stated, exclusive of VAT (value added tax) and exclusive of any packing and carriage.

Please contact us for any other further information/details on sales@canningconveyor.co.uk on any particular item of interest, for photographs, drawings, sketches and any questions/queries you have. We would only be too please to make any arrangements with you for viewing, inspection etc ...

TELEPHONE 01909 486166

CANNOFLEX QUALITIES



Cannoflex Standard Conveyor Belting is made with E.P fabric plies. The top and bottom are provided with abrasion resistant rubber covers to DIN 22102 and B.S 490.

Application

For conveying heavy and sharp edged goods in bulk such as gravel, crushed stone, limestone, iron pellets, glass and coal, also sand, fertilisers etc.

Cannoflex conveyor belts are quality products with an extremely high degree of reliability. The manufacturers have over 60 years of experience in belt production. Extensive testing devices ensure that Cannoflex belts are released only if they are first class from the viewpoint of chemical, technological, structural and manufacturing techniques.

Carcass

The function of the carcass is to transmit and absorb the forces acting on the belt. It is primarily a question of tensile forces from the driving pulley. Secondly the carcass absorbs the impact that partly appears when the material is loaded onto the conveyor and partly when the belt with material passes over the carrying idlers.

The carcass consists of one or more plies of textile fabric with rubber on each side to give adhesion and flexibility. The longitudinal direction is called warp and cross direction is called weft.

The conveyor belt fabrics can have the same or different material in warp and weft. One letter is designating each, for instance EP, in which E is Polyester in warp and P is Polyamide in weft.

In the following the most common carcass materials are described.

Cotton (B)

A natural fibre used in both warp and weft. Cotton is still used in conveyor belt fabrics, but it is being displaced by synthetic material.

Polyester (E)

Synthetic fibres such as Terylene, Trevira, Diolen, and Teton. Polyester fabrics are not influenced by moisture or micro organisms. They are very flexible, have stability in length and are acid resistant.

Polyamide (P)

Synthetic fibres known as Nylon and Perlon. This fabric has more or less the same characteristics as Polyester, but not the length stability.

Polyester-Polyamide (EP)

The EP fabrics have Polyester as the warp and Polyamide as the weft. This combination gives the best possible fabric characteristics with the following advantages:

- High strength in proportion to weight
- High resistance to impact
- Negligible elongation
- Great flexibility, excellent trough ability
- Not susceptible to humidity and micro-organisms

These technical advantages as well as many years' experience in the conveyor belt field are the reason why Canning Conveyors prefer EP as carcass material in conveyor belts.

Covers

The covers protect the carcass and give the necessary friction between belt and driving pulley and between belt and driving pulley and between belt and material.

As the covers must resist influences from the transported material and the weather, cover types that are wear resistant, oil and/or heat resistance, antistatic or the combine two or more of these properties are required.



NEW CANNOFLEX STANDARD BELTS

PRODUCT REF	SPEC	COVERS MM	BELT TYPE IN STOCK	WIDTH MM	QTY MTRS
10114/12	EP 200/2	2+1.5	Cannoflex Belt	305	50.9
808/03/12	EP 200/2	2+1.0	Cannoflex Belt	300	56
808/15/12	EP 315/2	3+1.5	Cannoflex Belt	300	51
808/16/12	EP 315/2	3+1.5	Cannoflex Belt	300	105
808/17/12	EP 315/2	3+1.5	Cannoflex Belt	300	105
808/08/12	EP 315/3	3+1.5	Cannoflex Belt	300	75
808/09/12	EP 315/3	3+1.5	Cannoflex Belt	300	103.6
947/07/14	EP 315/3	3+1.5	Cannoflex Belt	350	127
956/01/14	EP 500/3	5+1.5	Cannoflex Belt	350	192
905/07/16	EP 315/2	3+1.5	Cannoflex Belt	400	151.5
053/01/16	EP 315/3	3+1.5	Cannoflex Belt	400	86
956/02/16	EP 500/3	5+1.5	Cannoflex Belt	400	99.5
135/01/18	EP 250/2	2+1.0	Cannoflex Belt	450	179.9
853/07/18	EP 315/2	3+1.0	Cannoflex Belt	450	71.8
991/02/18	EP 315/3	3+1.5	Cannoflex Belt	450	75.5
123/06/18	EP 500/3	3+1.5	Cannoflex Belt	450	354
930/02/18	EP 500/3	3+1.5	Cannoflex Belt	450	126.5
172/01/18	EP 500/3	5+1.5	Cannoflex Belt	450	171.5
135/02/20	EP 250/2	2+1.0	Cannoflex Belt	500	308
152/09/20	EP 315/2	3+1.0	Cannoflex Belt	500	56
10424/20	EP 315/2	3+1.0	Cannoflex Belt	500	117
179/02/20	EP 315/3	3+1.5	Cannoflex Belt	500	330
179/03/20	EP 315/3	3+1.5	Cannoflex Belt	500	332
068/05/20	EP 315/3	3+1.5	Cannoflex Belt	500	160.5
123/07/20	EP 500/3	3+1.5	Cannoflex Belt	500	317
082/05/20	EP 500/3	5+1.5	Cannoflex Belt	500	30.5
188/01/20	EP 500/3	5+1.5	Cannoflex Belt	500	268
188/02/20	EP 500/3	5+1.5	Cannoflex Belt	500	400
188/03/20	EP 500/3	5+1.5	Cannoflex Belt	500	66
229/06/24	EP 200/2	2+1.0	Cannoflex Belt	600	353
222/04/24	EP 315/3	3+1.5	Cannoflex Belt	600	354
222/03/24	EP 315/3	3+1.5	Cannoflex Belt	600	355
182/01/24	EP 315/3	3+1.5	Cannoflex Belt	600	403
172/04/24	EP 315/3	3+1.5	Cannoflex Belt	600	158
211/06/24	EP 400/3	5+1.5	Cannoflex Belt	600	50
143/07/24	EP 500/3	3+1.5	Cannoflex Belt	600	55
120/03/24	EP 500/3	3+1.5	Cannoflex Belt	600	60
120/04/24	EP 500/3	3+1.5	Cannoflex Belt	600	335
188/10/24	EP 630/4	5+1.5	Cannoflex Belt	600	83
9538/24	EP 800/4	5+2.0	Cannoflex Belt	600	152
236/03/26	EP 200/2	2+1.0	Cannoflex Belt	650	352
133/01/26	EP 315/2	3+1.0	Cannoflex Belt	650	129.5
003/02/26	EP 315/3	3+1.5	Cannoflex Belt	650	254
057/04/26	EP 500/3	3+1.5	Cannoflex Belt	650	53.5
133/02/26	EP 500/3	3+1.5	Cannoflex Belt	650	353
218/01/26	EP 500/3	5+1.5	Cannoflex Belt	650	354
218/02/26	EP 500/3	5+1.5	Cannoflex Belt	650	355
172/06/26	EP 500/3	5+1.5	Cannoflex Belt	650	107.5
172/07/26	EP 500/3	5+1.5	Cannoflex Belt	650	114
211/13/26	EP 500/3	5+2.0	Cannoflex Belt	650	197
549/13/30	EP 200/2	2+1.0	Cannoflex Belt	750	56.5
126/01/30	EP 250/2	2+1.0	Cannoflex Belt	750	311
123/02/30	EP 315/2	3+1.0	Cannoflex Belt	750	304
229/03/30	EP 315/3	3+1.5	Cannoflex Belt	750	150
211/10/30	EP 400/3	4+2.0	Cannoflex Belt	750	100
229/05/30	EP 500/3	3+1.5	Cannoflex Belt	750	161
10393/30	EP 500/3	5+1.5	Cannoflex Belt	750	35
236/01/30	EP 500/3	5+1.5	Cannoflex Belt	750	353
211/04/30	EP 630/3	4+2.0	Cannoflex Belt	750	99
211/05/30	EP 630/3	4+2.0	Cannoflex Belt	750	99
194/06/30	EP 630/4	5+1.5	Cannoflex Belt	750	300
125/02/32	EP 200/2	2+1.0	Cannoflex Belt	800	228.5
152/03/32	EP 315/2	3+1.0	Cannoflex Belt	800	171
152/04/32	EP 315/2	3+1.0	Cannoflex Belt	800	304
179/05/32	EP 315/3	3+1.5	Cannoflex Belt	800	78.4
211/08/32	EP 400/3	4+2.0	Cannoflex Belt	800	100
211/02/32	EP 400/3	4+2.0	Cannoflex Belt	800	52
211/11/32	EP 400/3	4+2.0	Cannoflex Belt	800	201
211/12/32	EP 400/3	4+2.0	Cannoflex Belt	800	202
211/07/32	EP 400/4	4+2.0	Cannoflex Belt	800	100
125/04/32	EP 500/3	3+1.5	Cannoflex Belt	800	206
117/05/32	EP 500/3	5+1.5	Cannoflex Belt	800	92.5
157/05/32	EP 500/3	5+1.5	Cannoflex Belt	800	150
157/06/32	EP 500/3	5+1.5	Cannoflex Belt	800	350
091/02/32	EP 630/4	5+1.5	Cannoflex Belt	800	86
137/02/32	EP 800/4	6+2.0	Cannoflex Belt	800	298
125/01/36	EP 200/2	2+1.0	Cannoflex Belt	900	197
991/06/36	EP 315/2	3+1.0	Cannoflex Belt	900	48.5
154/02/36	EP 315/2	3+1.0	Cannoflex Belt	900	283



NEW CANNOFLEX STANDARD BELTS

PRODUCT REF	SPEC	COVERS MM	BELT TYPE IN STOCK	WIDTH MM	QTY MTRS
178/02/36	EP 315/3	3+1.5	Cannoflex Belt	900	302
178/01/36	EP 315/3	3+1.5	Cannoflex Belt	900	123.2
189/08/36	EP 500/3	3+1.5	Cannoflex Belt	900	301.6
181/03/36	EP 500/3	5+1.5	Cannoflex Belt	900	74
225/03/36	EP 500/3	5+1.5	Cannoflex Belt	900	380
081/02/36	EP 500/3	5+1.5	Cannoflex Belt	900	56
081/04/36	EP 500/3	5+1.5	Cannoflex Belt	900	36
225/04/36	EP 500/3	5+1.5	Cannoflex Belt	900	379
237/09/36	EP 630/4	5+1.5	Cannoflex Belt	900	405
049/04/36	EP 630/4	5+1.5	Cannoflex Belt	900	89
081/01/36	EP 630/4	5+1.5	Cannoflex Belt	900	52
078/04/36	EP 630/4	5+1.5	Cannoflex Belt	900	91.5
199/01/36	EP 630/4	8+2.0	Cannoflex Belt	900	280
199/02/36	EP 630/4	8+2.0	Cannoflex Belt	900	280
199/03/36	EP 800/4	6+2.0	Cannoflex Belt	900	90
898/05/36	EP 800/5	6+2.0	Cannoflex Belt	900	32.5
147/03/36	EP 800/5	6+2.0	Cannoflex Belt	900	188
117/01/36	EP 800/5	6+2.0	Cannoflex Belt	900	141
236/06/36	EP 800/5	6+2.0	Cannoflex Belt	900	328
054/02/42	EP 1000/5	7+2.0	Cannoflex Belt	1000	163
128/04/42	EP 250/2	2+1.0	Cannoflex Belt	1000	119.6
123/04/42	EP 315/2	3+1.0	Cannoflex Belt	1000	169
041/02/42	EP 630/4	5+1.5	Cannoflex Belt	1000	409
070/05/42	EP 630/4	5+1.5	Cannoflex Belt	1000	149.5
147/02/42	EP 800/5	6+2.0	Cannoflex Belt	1000	132
031/08/42	EP 1000/5	7+2.0	Cannoflex Belt	1050	252
125/06/42	EP 1250/5	7+2.0	Cannoflex Belt	1050	225
163/02/42	EP 200/2	2+1.0	Cannoflex Belt	1050	256
399/02/42	EP 315/2	3+1.0	Cannoflex Belt	1050	72.5
157/02/42	EP 315/2	3+1.0	Cannoflex Belt	1050	255
053/08/42	EP 315/3	3+1.5	Cannoflex Belt	1050	307
137/03/42	EP 500/3	3+1.5	Cannoflex Belt	1050	82
133/05/42	EP 500/3	5+1.5	Cannoflex Belt	1050	157
180/07/42	EP 630/4	5+1.5	Cannoflex Belt	1050	52
034/01/42	EP 630/4	8+3.0	Cannoflex Belt	1050	102
217/03/42	EP 800/4	6+2.0	Cannoflex Belt	1050	268
178/03/42	EP 800/5	6+2.0	Cannoflex Belt	1050	335
793/07/42	EP 800/5	6+2.0	Cannoflex Belt	1050	59
019/05/42	EP 800/5	6+2.0	Cannoflex Belt	1050	60
117/02/42	EP 800/5	6+2.0	Cannoflex Belt	1050	120
157/01/42	EP 800/5	6+2.0	Cannoflex Belt	1050	73
5919/44	EP 250/2	3+1.0	Cannoflex Belt	1120	125.6
10252/48	EP 1250/5	7+2.0	Cannoflex Belt	1200	71
157/03/48	EP 200/2	2+1.0	Cannoflex Belt	1200	173.7
633/09/48	EP 315/2	3+1.0	Cannoflex Belt	1200	294.7
977/03/48	EP 315/3	3+1.5	Cannoflex Belt	1200	168.4
236/07/48	EP 315/3	3+1.5	Cannoflex Belt	1200	305
236/08/48	EP 500/3	3+1.5	Cannoflex Belt	1200	302
796/08/48	EP 500/3	3+1.5	Cannoflex Belt	1200	104.5
181/06/48	EP 500/3	5+1.5	Cannoflex Belt	1200	102
181/05/48	EP 500/3	5+1.5	Cannoflex Belt	1200	76
081/05/48	EP 630/4	5+1.5	Cannoflex Belt	1200	57
081/06/48	EP 630/4	5+1.5	Cannoflex Belt	1200	96
229/02/48	EP 630/3	5+1.5	Cannoflex Belt	1200	117
229/08/48	EP 630/4	5+1.5	Cannoflex Belt	1200	354
230/01/48	EP 630/4	5+1.5	Cannoflex Belt	1200	268
236/04/48	EP 630/4	8+3.0	Cannoflex Belt	1200	277
236/05/48	EP 800/4	6+2.0	Cannoflex Belt	1200	328
163/06/48	EP 800/5	6+2.0	Cannoflex Belt	1200	66
229/04/48	EP 800/5	6+2.0	Cannoflex Belt	1200	346
222/01/48	EP 800/5	8+2.0	Cannoflex Belt	1200	278
222/02/48	EP 800/5	8+2.0	Cannoflex Belt	1200	128
115/05/54	EP 1250/5	7+2.0	Cannoflex Belt	1400	204
094/04/54	EP 1250/5	7+2.0	Cannoflex Belt	1400	204
737/01/54	EP 450/2	4+4.0	Cannoflex Belt	1360	190.6
094/03/54	EP 500/3	5+1.5	Cannoflex Belt	1400	75.5
092/02/54	EP 800/4	6+2.0	Cannoflex Belt	1400	304
135/07/54	EP 800/5	6+2.0	Cannoflex Belt	1400	131
225/02/60	EP 200/2	2+1.0	Cannoflex Belt	1500	209
126/02/60	EP 315/2	3+1.0	Cannoflex Belt	1500	226
154/03/60	EP 315/3	3+1.5	Cannoflex Belt	1500	36
179/06/60	EP 315/3	3+1.5	Cannoflex Belt	1500	307
070/03/60	EP 500/3	5+1.5	Cannoflex Belt	1500	163.5
217/01/60	EP 500/3	5+1.5	Cannoflex Belt	1500	308
163/01/60	EP 630/4	5+1.5	Cannoflex Belt	1500	159
217/02/60	EP 630/4	6+2.0	Cannoflex Belt	1500	153
058/04/63	EP 1250/5	7+2.0	Cannoflex Belt	1600	82
778/01/64	EP 315/2	3+1.0	Cannoflex Belt	1600	230.3
225/01/63	EP 315/3	3+1.5	Cannoflex Belt	1600	257

236/02/63	EP 500/3	5+1.5	Cannoflex Belt	1600	302
907/01/63	EP 630/4	5+1.5	Cannoflex Belt	1600	116
120/05/63	EP 630/4	5+1.5	Cannoflex Belt	1600	80.5
088/05/63	EP 800/4	6+2.0	Cannoflex Belt	1600	304
088/06/63	EP 800/4	6+2.0	Cannoflex Belt	1600	70.5
088/04/63	EP 800/5	6+2.0	Cannoflex Belt	1600	307
951/08/63	EP 800/5	6+2.0	Cannoflex Belt	1600	90
058/03/72	EP 1250/5	7+2.0	Cannoflex Belt	1800	242
168/03/72	EP 200/2	2+1.5	Cannoflex Belt	1800	40.7
668/01/72	EP 315/2	3+1.0	Cannoflex Belt	1800	300
668/02/72	EP 315/2	3+1.0	Cannoflex Belt	1800	65
722/02/72	EP 315/3	3+1.5	Cannoflex Belt	1800	56.5
229/07/72	EP 500/3	5+1.5	Cannoflex Belt	1800	181
967/06/72	EP 630/4	5+1.5	Cannoflex Belt	1800	93.5
237/10/72	EP 800/4	2+2.0	Cannoflex Belt	1800	358
092/06/72	EP 800/5	6+2.0	Cannoflex Belt	1800	129
092/07/72	EP 800/5	6+2.0	Cannoflex Belt	1800	280
137/01/78	EP 1250/5	7+2.0	Cannoflex Belt	2000	120
930/06/78	EP 200/2	2+1.0	Cannoflex Belt	2000	95
108/01/78	EP 800/4	6+2.0	Cannoflex Belt	2000	83
757/05/82	EP 315/3	2+1.5	Cannoflex Belt	2100	82
473/02/84	EP 250/2	2+1.0	Cannoflex Belt	2150	127



CROSS STABILISED CONVEYOR BELT

XE250/2 3+1 XE400/3 3+1.5
XE500/3 5+1.5 XE630/4 5+2

ALL IN VARIOUS WIDTHS UP TO 1200mm AT PRESENT

NEW STOCK RANGE



NEW CANNOFLEX BELTING

Heavy Duty EP1250/5 7+2

in widths

1050 • 1200 • 1400 • 1600 • 1800 and 2000mm

NEW STOCK RANGE

CANNINGS BELT REELING MACHINE



The CANNING'S BELT REELING MACHINE is a most economical, cost effective way of handling and reeling conveyor belting.

2 Standard Models:

REELER WITH DIESEL DRIVE/ELECTRIC START



MODEL C36 belt widths up to 1000mm (36")

MODEL C72 belt widths up to 1800mm (72")

Both models can reel up to approx 200 metres of 12.5mm (1/2") thick belt.

Portable - for ease of handling on site and available with diesel or electric drive. Can be transported by 35cwt pick-up truck. Hired extensively to British Coal and numerous quarries throughout the UK.

REELER WITH DIESEL DRIVE/ELECTRIC START



Incorporating the unique 'Roll Releasing Mechanism'.

Individual machines for alternative sizes and specification made to order.

NEW CANNOFLEX CHEVRON BELT

PRODUCT	SPEC	COVERS	CLEAT	BELT TYPE	WIDTH	QTY
212/03/18	EP 200/2	2+1.0	15	C/flex Chevron	450	144
212/09/18	EP 200/2	2+1.0	15	C/flex Chevron	450	160
741/07/18	EP 200/2	2+1.0	15	C/flex Chevron	450	58.5
741/08/18	EP 200/2	2+1.0	15	C/flex Chevron	450	160
741/09/18	EP 200/2	3+2.0	15	C/flex Chevron	450	161
741/10/18	EP 200/2	3+2.0	15	C/flex Chevron	450	159
171/01/18	EP 315/3	3+1.5	15	C/flex Chevron	450	121.4
075/06/20	EP 200/2	3+1.5	15	C/flex Chevron	500	111.6
075/07/20	EP 200/2	3+1.5	15	C/flex Chevron	500	122
144/02/20	EP 200/2	2+1.0	15	C/flex Chevron	500	91.5
144/03/20	EP 200/2	2+1.0	15	C/flex Chevron	500	117
723/04/20	EP 200/2	3+2.0	15	C/flex Chevron	500	60.5
044/01/20	EP 315/3	3+1.5	15	C/flex Chevron	500	161
039/02/20	EP 315/3	3+1.5	15	C/flex Chevron	500	58
039/03/20	EP 315/3	3+1.5	25	C/flex Chevron	500	100
039/04/20	EP 315/3	3+1.5	25	C/flex Chevron	500	131
039/05/20	EP 315/3	3+1.5	25	C/flex Chevron	500	134
166/02/24	EP 200/2	3+2.0	15	C/flex Chevron	600	131
224/04/24	EP 315/3	3+1.5	15	C/flex Chevron	600	99
224/05/24	EP 315/3	3+1.5	15	C/flex Chevron	600	157
224/06/24	EP 315/3	3+1.5	15	C/flex Chevron	600	154
228/06/24	EP 315/3	3+1.5	15	C/flex Chevron	600	150
228/07/24	EP 315/3	3+1.5	15	C/flex Chevron	600	150
228/08/24	EP 315/3	3+1.5	15	C/flex Chevron	600	150
171/02/24	EP 315/3	3+1.5	25	C/flex Chevron	600	130
171/03/24	EP 315/3	3+1.5	25	C/flex Chevron	600	130
171/04/24	EP 315/3	3+1.5	25	C/flex Chevron	600	133
166/03/24	EP 315/3	3+1.5	25	C/flex Chevron	600	130
165/01/24	EP 315/3	3+1.5	25	C/flex Chevron	600	50
165/02/24	EP 315/3	3+1.5	25	C/flex Chevron	600	131
165/03/24	EP 315/3	3+1.5	25	C/flex Chevron	600	132
165/04/24	EP 315/3	3+1.5	25	C/flex Chevron	600	130
165/06/24	EP 315/3	3+1.5	25	C/flex Chevron	600	132
144/05/24	EP 315/3	3+1.5	25	C/flex Chevron	600	129
142/02/24	EP 315/3	3+1.5	25	C/flex Chevron	600	42.3
142/03/24	EP 315/3	3+1.5	25	C/flex Chevron	600	75
064/06/24	EP 315/3	3+1.5	25	C/flex Chevron	600	131
065/07/24	EP 315/3	3+1.5	25	C/flex Chevron	600	131
065/10/24	EP 315/3	3+1.5	25	C/flex Chevron	600	132
065/11/24	EP 315/3	3+1.5	25	C/flex Chevron	600	132
069/01/24	EP 315/3	3+1.5	25	C/flex Chevron	600	131
10337/24	EP 500/3	4+2.0	25	C/flex Chevron	600	53
233/06/24	EP 500/3	4+2.0	25	C/flex Chevron	600	130
233/07/24	EP 500/3	4+2.0	25	C/flex Chevron	600	130
957/07/26	EP 200/2	2+1.0	15	C/flex Chevron	650	159
957/08/26	EP 200/2	2+1.0	15	C/flex Chevron	650	108
965/01/26	EP 200/2	2+1.0	15	C/flex Chevron	650	159
156/07/26	EP 200/2	3+1.5	15	C/flex Chevron	650	151
144/07/26	EP 200/2	3+1.5	15	C/flex Chevron	650	149
069/03/26	EP 200/2	3+2.0	15	C/flex Chevron	650	137
069/10/26	EP 200/2	3+2.0	15	C/flex Chevron	650	162
045/03/26	EP 315/3	3+1.5	15	C/flex Chevron	650	159
045/05/26	EP 315/3	3+1.5	15	C/flex Chevron	650	161
050/01/26	EP 315/3	3+1.5	15	C/flex Chevron	650	158
050/02/26	EP 315/3	3+1.5	15	C/flex Chevron	650	160
144/09/26	EP 315/3	3+1.5	15	C/flex Chevron	650	152
166/04/26	EP 315/3	3+1.5	15	C/flex Chevron	650	150
166/05/26	EP 315/3	3+1.5	15	C/flex Chevron	650	150
166/06/26	EP 315/3	3+1.5	15	C/flex Chevron	650	150
156/09/26	EP 315/3	3+1.5	15	C/flex Chevron	650	150
171/07/26	EP 315/3	3+1.5	15	C/flex Chevron	650	150
215/01/26	EP 315/3	3+1.5	25	C/flex Chevron	650	82
215/02/26	EP 315/3	3+1.5	25	C/flex Chevron	650	130
215/03/26	EP 315/3	3+1.5	25	C/flex Chevron	650	130
008/10/26	EP 500/3	4+2.0	25	C/flex Chevron	650	79
228/03/30	EP 200/2	3+2.0	15	C/flex Chevron	750	160
228/04/30	EP 200/2	3+2.0	15	C/flex Chevron	750	160
209/10/30	EP 315/3	3+1.5	15	C/flex Chevron	750	162
209/12/30	EP 315/3	3+1.5	15	C/flex Chevron	750	161
212/04/30	EP 315/3	3+1.5	15	C/flex Chevron	750	160
212/05/30	EP 315/3	3+1.5	15	C/flex Chevron	750	156
209/03/30	EP 315/3	3+1.5	15	C/flex Chevron	750	165
209/04/30	EP 315/3	3+1.5	15	C/flex Chevron	750	165
023/04/30	EP 315/3	3+1.5	15	C/flex Chevron	750	38.5
071/04/30	EP 315/3	3+1.5	15	C/flex Chevron	750	60
071/06/30	EP 315/3	3+1.5	15	C/flex Chevron	750	162
067/01/30	EP 315/3	3+1.5	25	C/flex Chevron	750	52
193/02/30	EP 315/3	3+1.5	25	C/flex Chevron	750	131
183/09/30	EP 315/3	3+1.5	25	C/flex Chevron	750	70
183/10/30	EP 315/3	3+1.5	25	C/flex Chevron	750	132
183/11/30	EP 315/3	3+1.5	25	C/flex Chevron	750	130



PLEASE CONTACT BELT SALES FOR FURTHER DETAILS

171/13/30	EP 315/3	3+1.5	25	C/flex Chevron	750	134
165/07/30	EP 500/3	4+2.0	25	C/flex Chevron	750	102
233/01/32	EP 200/2	3+2.0	15	C/flex Chevron	800	160
209/11/32	EP 315/3	3+1.5	15	C/flex Chevron	800	160
209/05/32	EP 315/3	3+1.5	15	C/flex Chevron	800	54
212/06/32	EP 315/3	3+1.5	15	C/flex Chevron	800	160
212/07/32	EP 315/3	3+1.5	15	C/flex Chevron	800	160
084/10/32	EP 315/3	3+1.5	25	C/flex Chevron	800	88
084/11/32	EP 315/3	3+1.5	25	C/flex Chevron	800	67
101/01/32	EP 315/3	3+1.5	25	C/flex Chevron	800	131
116/03/32	EP 315/3	3+1.5	25	C/flex Chevron	800	130
116/04/32	EP 315/3	3+1.5	25	C/flex Chevron	800	131
127/01/32	EP 315/3	3+1.5	25	C/flex Chevron	800	130
209/06/32	EP 500/3	4+2.0	15	C/flex Chevron	800	51
233/04/32	EP 500/3	4+2.0	15	C/flex Chevron	800	160
233/02/32	EP 500/3	4+2.0	25	C/flex Chevron	800	130
233/03/32	EP 500/3	4+2.0	25	C/flex Chevron	800	130
116/02/32	EP 500/3	4+2.0	25	C/flex Chevron	800	65
212/08/32	EP 630/4	4+2.0	15	C/flex Chevron	800	160
069/09/36	EP 315/3	3+1.5	15	C/flex Chevron	900	160
101/05/36	EP 315/3	3+1.5	25	C/flex Chevron	900	131
101/06/36	EP 315/3	3+1.5	25	C/flex Chevron	900	132
221/01/36	EP 500/3	4+2.0	15	C/flex Chevron	900	79
221/02/36	EP 500/3	4+2.0	15	C/flex Chevron	900	164
084/06/36	EP 500/3	4+2.0	15	C/flex Chevron	900	63
171/15/36	EP 500/3	4+2.0	25	C/flex Chevron	900	64
183/01/36	EP 500/3	4+2.0	25	C/flex Chevron	900	130
171/08/36	EP 630/4	4+2.0	25	C/flex Chevron	900	130
896/07/36	EP 630/4	4+2.0	25	C/flex Chevron	900	57.5
183/04/42	EP 315/3	3+1.5	15	C/flex Chevron	1050	111
079/07/42	EP 315/3	3+1.5	25	C/flex Chevron	1050	85
116/06/42	EP 315/3	3+1.5	25	C/flex Chevron	1050	133
193/01/42	EP 500/3	4+2.0	15	C/flex Chevron	1050	150
228/05/42	EP 500/3	4+2.0	15	C/flex Chevron	1050	160
171/09/42	EP 500/3	4+2.0	25	C/flex Chevron	1050	102.5
183/05/42	EP 630/4	4+2.0	25	C/flex Chevron	1050	99
233/05/42	EP 630/4	4+2.0	25	C/flex Chevron	1050	130
084/07/42	EP 315/3	3+1.5	15	C/flex Chevron	1050	107
029/08/42	EP 315/3	3+1.5	25	C/flex Chevron	1050	130
795/07/42	EP 315/3	3+2.0	25	C/flex Chevron	1050	69.4
989/05/42	EP 500/3	4+2.0	25	C/flex Chevron	1050	129
776/06/42	EP 500/3	4+2.0	25	C/flex Chevron	1050	66
989/06/42	EP 630/4	4+2.0	25	C/flex Chevron	1050	107
101/07/48	EP 315/3	3+1.5	15	C/flex Chevron	1200	54.3
142/01/48	EP 315/3	3+1.5	15	C/flex Chevron	1200	150
144/01/48	EP 315/3	3+1.5	15	C/flex Chevron	1200	150
209/01/48	EP 315/3	3+1.5	25	C/flex Chevron	1200	132
209/07/48	EP 315/3	3+1.5	25	C/flex Chevron	1200	131
101/04/48	EP 400/3	5+1.5	25	C/flex Chevron	1200	121
183/06/48	EP 500/3	4+2.0	15	C/flex Chevron	1200	74
183/07/48	EP 500/3	4+2.0	15	C/flex Chevron	1200	150
183/08/48	EP 500/3	4+2.0	25	C/flex Chevron	1200	130
171/10/48	EP 500/3	4+2.0	25	C/flex Chevron	1200	131
127/05/48	EP 500/3	4+2.0	25	C/flex Chevron	1200	87.5
165/08/48	EP 500/3	4+2.0	25	C/flex Chevron	1200	130
166/07/48	EP 500/3	4+2.0	25	C/flex Chevron	1200	131
166/08/48	EP 630/4	4+2.0	25	C/flex Chevron	1200	60
171/11/48	EP 630/4	4+2.0	25	C/flex Chevron	1200	131
209/02/48	EP 630/4	4+2.0	25	C/flex Chevron	1200	134



NEW STOCK



**HIGHWALL
CLEATING**

35mm, 60mm, 80mm, 100mm, 120mm
25mm, 35mm, 50mm, 75mm,
90mm, 110mm

**ADHESIVE GLUE
PACKS & PRIMER**

**NEW
STOCK RANGE**



NEW STOCK

SKIRTING RUBBER - SCRAPER BLADE

8mm, 10mm, 15mm, 20mm, 25mm thickness

**NEW
STOCK RANGE**



NEW FRICTION BACK CANNOFLEX BELTS

PRODUCT REF	SPEC	COVERS MM	BELT TYPE IN STOCK	WIDTH MM	QTY MTRS
9482/12	EP 400/3	3+0	C/flex F- Back	300	80
193/03/14	EP 250/2	2+0	C/flex F- Back	350	128
193/04/16	EP 250/2	2+0	C/flex F- Back	400	202
193/05/20	EP 250/2	2+0	C/flex F- Back	500	165
9929/20	EP 400/3	3+0	C/flex F- Back	500	105.5
953/03/20	EP 400/3	3+0	C/flex F- Back	500	64.7
193/10/24	EP 250/2	2+0	C/flex F- Back	600	336.5
033/03/24	EP 400/3	3+0	C/flex F- Back	600	205
193/06/26	EP 250/2	2+0	C/flex F- Back	650	177
944/07/26	EP 400/3	3+0	C/flex F- Back	650	207
944/06/30	EP 250/2	2+0	C/flex F- Back	750	163.5
193/08/30	EP 400/3	3+0	C/flex F- Back	750	199
193/07/32	EP 250/2	2+0	C/flex F- Back	800	165
193/09/32	EP 400/3	3+0	C/flex F- Back	800	171
196/03/36	EP 250/2	3+0	C/flex F- Back	900	190.5
212/01/36	EP 400/3	3+0	C/flex F- Back	900	163
196/04/42	EP 250/2	3+0	C/flex F- Back	1050	192
212/02/42	EP 400/3	3+0	C/flex F- Back	1050	181
870/06/48	EP 250/2	2+0	C/flex F- Back	1200	147
193/11/48	EP 250/2	2+0	C/flex F- Back	1200	405
074/05/48	EP 400/3	3+0	C/flex F- Back	1200	109
196/06/48	EP 400/3	3+0	C/flex F- Back	1200	201
152/13/64	EP 250/2	2+0	C/flex F- Back	1600	174
152/12/64	EP 400/3	3+0	C/flex F- Back	1600	194.5
944/09/72	EP 250/2	2+0	C/flex F- Back	1800	105
944/10/72	EP 250/2	2+0	C/flex F- Back	1800	205
956/04/72	EP 400/3	3+0	C/flex F- Back	1800	128
196/05/78	EP 250/2	3+0	C/flex F- Back	2000	202
209/09/78	EP 400/3	3+0	C/flex F- Back	2000	203

NEW GRIPFACE CANNOFLEX BELTS

PRODUCT REF	SPEC	COVERS MM	BELT TYPE IN STOCK	WIDTH MM	QTY MTRS
033/10/20	EP 250/2	2+0	C/flex Gripface	500	200
212/13/20	EP 400/3	3+0	C/flex Gripface	500	196
9605/24	EP 250/2	2+0	C/flex Gripface	590	101
031/05/24	EP 250/2	2+0	C/flex Gripface	600	190
10009/24	EP 250/2	3+0	C/flex Gripface	600	107
10131/24	EP 250/2	3+0	C/flex Gripface	600	202
10132/24	EP 250/2	3+0	C/flex Gripface	600	203
10203/24	EP 250/2	3+0	C/flex Gripface	600	64
033/07/26	EP 250/2	2+0	C/flex Gripface	650	137
228/02/26	EP 400/3	3+0	C/flex Gripface	650	90
215/06/30	EP 250/2	3+0	C/flex Gripface	750	200
220/04/30	EP 250/2	3+0	C/flex Gripface	750	162
041/07/30	EP 400/3	3+0	C/flex Gripface	750	106
9530/32	EP 250/2	3+0	C/flex Gripface	800	108.8
041/06/32	EP 400/3	3+0	C/flex Gripface	800	182
033/04/36	EP 250/2	2+0	C/flex Gripface	900	66
033/05/36	EP 250/2	2+0	C/flex Gripface	900	204
035/04/36	EP 400/3	3+0	C/flex Gripface	900	113
10202/42	EP 250/2	3+0	C/flex Gripface	1000	100
220/03/42	EP 250/2	3+0	C/flex Gripface	1050	200
215/05/42	EP 250/2	3+0	C/flex Gripface	1050	196
228/01/42	EP 400/3	3+0	C/flex Gripface	1050	200
180/03/48	EP 250/2	3+0	C/flex Gripface	1200	201
180/04/48	EP 250/2	3+0	C/flex Gripface	1200	204
105/07/48	EP 250/2	3+0	C/flex Gripface	1200	82
212/14/48	EP 400/3	3+0	C/flex Gripface	1200	196
031/02/48	EP 400/3	3+0	C/flex Gripface	1200	117.5
221/06/60	EP 250/2	3+0	C/flex Gripface	1500	201
224/03/60	EP 250/2	3+0	C/flex Gripface	1500	201
910/08/60	EP 400/3	3+0	C/flex Gripface	1500	121.3
910/06/63	EP 400/3	3+0	C/flex Gripface	1600	203
910/07/63	EP 400/3	3+0	C/flex Gripface	1600	165
155/01/64	EP 250/2	3+0	C/flex Gripface	1600	74
204/03/72	EP 250/2	3+0	C/flex Gripface	1830	203
204/04/72	EP 250/2	3+0	C/flex Gripface	1830	100
209/08/72	EP 250/2	3+0	C/flex Gripface	1830	202
212/11/72	EP 250/2	3+0	C/flex Gripface	1800	172
212/12/72	EP 250/2	3+0	C/flex Gripface	1800	200
204/01/72	EP 250/2	2+0	C/flex Gripface	1800	200
221/05/72	EP 250/2	3+0	C/flex Gripface	1830	203
204/02/72	EP 250/2	3+0	C/flex Gripface	1800	196
978/06/72	EP 315/3	4+0	C/flex Gripface	1800	182.5

NEW STOCK



NEW 'RIP STOP' CONVEYOR BELTING

EP630/3 plus 1 RIP STOP
8mm plus 3mm bottom, 16mm o/a thick
up to 1200mm wide from stock

OTHER SPEC AVAILABLE TO ORDER - 2 WEEKS

NEW STOCK RANGE

NEW SPECIAL BELTS

PRODUCT REF	SPEC	COVERS MM	BELT TYPE IN STOCK	WIDTH MM	QTY MTRS
Heat Res Cannoflex Belt					
230/04/18	EP 315/3	3+1.5	Cannoflex Heat Res	450	152
230/05/18	EP 315/3	3+1.5	Cannoflex Heat Res	450	153
230/07/20	EP 500/3	5+1.5	Cannoflex Heat Res	500	179
230/08/20	EP 500/3	5+1.5	Cannoflex Heat Res	500	179
123/08/24	EP 500/3	5+1.5	Cannoflex Heat Res	600	145.5
903/03/24	EP 500/3	5+1.5	Cannoflex Heat Res	600	64
230/06/26	EP 315/3	3+1.5	Cannoflex Heat Res	650	410
947/02/26	EP 500/3	5+1.5	Cannoflex Heat Res	650	354
519/05/30	EP 315/3	3+1.5	Cannoflex Heat Res	750	131
708/07/30	EP 500/3	5+1.5	Cannoflex Heat Res	750	64
172/03/30	EP 500/3	5+1.5	Cannoflex Heat Res	750	307
529/02/36	EP 315/3	3+1.5	Cannoflex Heat Res	900	85
179/08/36	EP 500/3	5+1.5	Cannoflex Heat Res	900	222
020/07/36	EP 630/4	6+2	Cannoflex Heat Res	900	199
307/01/42	EP 315/3	3+1.5	Cannoflex Heat Res	1050	30.8
658/05/42	EP 500/3	5+1.5	Cannoflex Heat Res	1050	205
659/05/48	EP 500/3	5+1.5	Cannoflex Heat Res	1200	193.5
10209/56	EP 500/3	5+1.5	Cannoflex Heat Res	1400	100
462/08/64	EP 315/3	3+1.5	Cannoflex Heat Res	1600	76.4
186/04/72	EP 500/3	5+1.5	Cannoflex Heat Res	1800	142.5
Oil Res Cannoflex Belt					
10365/20	EP 315/3	3+1.5	Cannoflex Oil Res	500	130
10359/20	EP 315/3	3+1.5	Cannoflex Oil Res	500	56.7
090/04/20	EP 500/3	5+1.5	Cannoflex Oil Res	500	99
10210/24	EP 250/2	3+0	Cannoflex Oil Res	570	58.5
188/04/24	EP 315/3	3+1.5	Cannoflex Oil Res	600	133.5
188/05/24	EP 315/3	3+1.5	Cannoflex Oil Res	600	305
090/01/24	EP 500/3	5+1.5	Cannoflex Oil Res	600	139
026/02/26	EP 500/3	5+1.5	Cannoflex Oil Res	650	169.5
839/05/30	EP 315/3	3+1.5	Cannoflex Oil Res	750	56
652/04/30	EP 500/3	5+1.5	Cannoflex Oil Res	750	280
135/04/32	EP 315/2	3+1.0	Cannoflex Oil Res	800	271
123/01/32	EP 500/3	5+1.5	Cannoflex Oil Res	800	202
123/09/36	EP 500/3	5+1.5	Cannoflex Oil Res	900	208
659/04/42	EP 500/3	5+1.5	Cannoflex Oil Res	1050	352
186/03/64	EP 315/3	3+1.5	Cannoflex Oil Res	1600	270
915/01/72	EP 250/2	3+0	Cannoflex Oil Res	1800	165
182/04/72	EP 500/3	5+1.5	Cannoflex Oil Res	1800	236
Cannoflex Elevator Belt					
10277/10	EP 800/4	2+2	Cannoflex Elevator	250	31.8
10377/16	EP 800/4	2+2	Cannoflex Elevator	400	35.5
10052/16	EP 800/4	2+2	Cannoflex Elevator	400	40
10381/24	EP 800/4	2+2	Cannoflex Elevator	535	105.5
10191/24	EP 800/5	2+2	Cannoflex Elevator	600	43.4
10072/42	EP 800/4	2+2	Cannoflex Elevator	990	37
10190/42	EP 800/5	2+2	Cannoflex Elevator	1000	66.5
10188/48	EP 800/4	2+2	Cannoflex Elevator	1145	56
10207/48	EP 800/4	2+2	Cannoflex Elevator	1155	60
988/02/63	EP 500/3	1+1	Cannoflex Elevator	1600	151

USED CONVEYOR BELTS

PRODUCT REF	TOP MM	BTM MM	THK	PLY	WIDTH MM	QTY MTRS
975/23/16	5	2	10	3	400	134
679/02/18	5	1	10	3	450	77
734/05/20	5	2	10	2	450	56
106/02/20	2.5	1.5	8	3	500	64.5
106/05/20	2.5	1.5	8	3	500	50
097/09/20	3	1	7	3	500	72
819/05/20	3	1	7	3	500	77.5
676/03/20	3	1.5	8	3	500	141
626/05/20	3	1	8	4	500	76
904/07/20	3.5	1.5	7	3	500	60
975/25/20	5	1.5	10	3	485	96
022/12/20	5	2	11	3	500	76
687/01/20	5	1	8	3	500	69
981/14/20	5	1	9	3	500	70
232/01/24	2	1	9	5	600	50.5
160/08/24	2.5	1	7	3	600	80
021/07/24	3	2	10	4	600	50
052/02/24	4	1.5	10	4	600	48
021/04/24	5	2.5	10	3	600	56
993/01/24	5	2	15	5	600	69
904/22/24	5	2	9	3	600	54
10017/24	7	3	13	4	600	70
195/01/26	2	1	10	5	650	77.5
203/01/26	2	1	11	4	650	58
707/03/26	3	1.5	8	3	650	39.5
205/01/26	3	1	8	3	635	60
819/06/26	3	1	8	3	650	54
9570/24	3	1.5	8	3	600	74
132/01/26	3.5	2.5	12	4	640	198
086/07/26	4	2	10	4	650	55
098/11/26	4	2	11	4	650	114
975/34/26	4	5	7	3	650	36
974/06/26	4.5	2	15	5	650	82
974/07/26	4.5	2	15	5	650	57
974/05/26	5	3	15	5	650	145.5
971/18/26	5	2	15	5	650	67
974/02/26	5	3	15	5	655	145
022/08/26	5	4	15	4	650	95
974/03/26	5	3	16	5	650	81.5
974/04/26	5	3	16	5	650	57
971/19/26	6	2	16	5	650	67
995/82/26	6	2	17	4	650	52
030/17/26	7	4	15	3	650	63
639/43/30	2.5	1	7	3	750	82
745/12/30	3	1.5	11	3	760	69
745/06/30	4	1	9	4	750	47
844/04/30	5	2	11	3	750	40
844/05/30	5	2	12	3	750	95.5
962/07/30	3	2	7	3	720	90
962/10/30	3	2	9	3	720	40
975/13/32	4	1	8	3	750	77.5
900/02/30	4	2	10	3	750	122
184/06/30	6	2	15	5	600	111
130/02/30	4	2	15	5	750	77
734/12/30	4	2	8	3	760	52
975/20/26	4	2	8	2	750	81
789/03/30	4	2	9	3	780	36.5
924/01/30	5	2	10	3	750	75.5
995/55/30	5	2	10	3	750	72
995/84/32	5	2.5	14	4	800	89
021/13/32	2	1	11	4	800	60.5
160/03/32	2.5	2	7	3	800	69
107/03/32	3	2	10	4	800	230
138/09/32	3	1.5	13	5	800	82
138/08/32	3	1.5	13	5	800	80
713/05/32	3	1.5	7	3	800	63
104/02/32	3	1	8	4	800	51.5
107/07/32	3	2	9	4	800	46
107/09/32	3	2	9	4	800	89
904/01/32	3	1	9	3	800	51
107/04/32	4	2	10	4	800	233
981/18/32	4	2	10	3	800	75
962/02/32	4	1	10	4	800	52
187/02/32	4	1.5	11	3	800	79
8700/32	4	1.5	19	7	800	38.8
865/16/32	4	2	9	3	790	106
711/02/32	4	2	9	3	800	79
954/01/32	4	1	9	3	800	85.8
098/02/32	4.5	2	11	3	810	55

975/43/32	5	1.5	10	3	800	69
022/02/32	5	2	10	3	800	192
994/17/32	5	1.5	11	3	800	57
9384/32	5	2	14	4	800	50.5
226/03/32	5	2	14	4	800	55
6999/32	5	2	17	4	800	41.7
981/24/32	6	2	10	3	800	50
021/01/32	6	2	11	3	800	206
754/03/32	7	2	13	4	800	43
865/01/32	9	3	18	3	800	55
754/11/32	7	2	15	4	800	71
976/12/32	8	3	14	3	800	110
453/31/32	8	3	16	3	800	34.5
051/05/36	4	1.5	14	5	900	122
880/10/36	2	1	10	4	900	72
485/21/36	2	1	7	3	890	195
485/26/36	2	1	7	3	900	121
485/18/36	2	1	7	3	890	231
962/16/36	2	1.5	8	3	880	128
160/02/36	2.5	2	7	3	900	74
713/02/36	3	1.5	7	3	900	98
713/04/36	3	1.5	7	3	900	139
485/13/36	3	1	7	3	890	142
962/15/36	3	2	8	3	870	115
962/12/36	3	2	8	3	880	96
962/06/36	3	2	8	3	870	229
051/02/36	5	2	15	5	900	64
963/08/36	7	3	15	5	900	64
122/06/36	3.5	1	10	4	900	54
122/07/36	4	1	10	4	900	107.5
122/05/36	4	1	10	4	900	49.5
994/15/36	4	2	10	3	900	60
962/01/36	4	2	11	4	880	75
995/18/36	4	1	13	4	900	37.5
975/05/36	4	1	9	2	930	76
897/26/36	4.5	1.5	9	3	900	60.5
994/08/36	5	1	10	3	800	53
981/03/36	5	2	10	3	900	117
022/05/36	5	3	11	3	900	55
022/07/36	5	3	11	3	900	255
975/16/36	5	2	11	3	900	73
975/17/36	5	2	11	3	900	49
975/35/36	5	2	11	3	900	118

SECONDHAND CONVEYOR BELT



For a quarter of a century Canning Conveyor have been supplying secondhand conveyor belting to the Mining and Quarrying Industries.

Our customers range from the large multi-national mining and quarrying organisations to ready-mixed concrete plants, stone, sand and gravel quarries, mines and screening and crushing operations, shipping wharfs, warehouses and the farming industry. We also export large amounts of belting to our agents and customers throughout the world.

No other company has the facilities and expertise to handle the amount of belting which our company supplies.

All secondhand belts are thoroughly examined by our expert staff - only belts which are sound in strength and show very little wear are supplied as reusable. Belts which do not pass examination are used for making other products.

Our sales staff take pride in their fast, friendly service and have at their fingertips the latest stock position and prices.





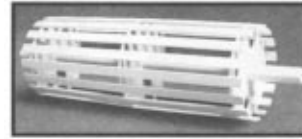
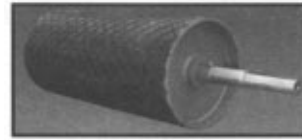
USED CONVEYOR BELTS

PRODUCT REF	TOP MM	BTM MM	THK	PLY	WIDTH MM	QTY MTRS
994/19/36	5	2	13	3	900	59
030/19/36	5	3	15	4	900	146
9551/36	5	3	15	4	900	89
981/02/36	5	1	9	3	900	99.5
981/22/36	6	2	10	3	900	54
976/19/36	6	2.5	11	3	900	88
995/60/36	6	2	15	4	900	101
995/61/36	6	2	15	4	900	100
995/62/36	6	2	15	4	900	100
976/20/36	7	2	11	3	900	66
997/11/36	7	2	12	3	900	82
997/18/36	8	3	14	3	900	83
712/03/42	5	1	14	5	990	69
817/01/42	2.5	2.5	12	2	1000	50
976/04/42	4	1.5	7	2	960	109
976/05/42	4	2	8	2	960	82
976/01/42	5	2	10	3	980	100
981/09/42	5	1	10	3	980	65
981/06/42	5	1	10	3	975	62.5
981/07/42	5	1	10	3	970	113
083/14/42	5	2	10	2	990	71
083/01/42	5	2	12	5	1000	91
083/10/42	5	2	13	5	1000	144
098/05/42	5	3	15	5	1000	60.5
086/04/42	5	3	16	2	1000	156
997/04/42	6	1.5	10	4	990	61
164/06/42	6	2.5	16	5	1000	115
963/09/42	7	2	15	5	1000	149
897/01/42	3	1.5	7	3	1040	86
937/15/42	5	2.5	17	5	1050	75
086/12/42	6	3	15	5	1040	54
995/40/42	4	0	11	4	1050	88
032/09/42	5	2	19	5	1050	58
066/06/42	7.5	4	17	4	1050	183
848/11/48	2	1.5	10	2	1200	81
609/17/48	2	1.5	11	2	1200	59
848/08/48	2	1.5	12	2	1195	54
817/02/48	2.5	2	10	2	1200	32
655/29/48	2.5	2.5	12	2	1200	60.5
684/09/48	2.5	2	13	2	1200	62
897/16/48	2.5	2	8	3	1200	91
937/04/48	3	1	12	5	1200	54
609/14/48	3	2.5	14	2	1200	40
030/07/48	3	2	14	2	1200	34
997/01/48	5	1.5	10	3	1190	63.5
098/06/48	3.5	2.5	10	4	1200	70.5
699/12/48	4	2	10	3	1180	91
699/13/48	4	2	11	3	1180	94
066/04/48	4	3	16	4	1200	84
981/11/48	5	1	10	3	1190	31.5
990/09/48	5	3	17	4	1200	128
995/44/48	6	2	15	4	1200	134
995/73/48	6	1	15	4	1200	30.5
683/01/48	6	4	18	4	1200	53

995/19/48	7	2	15	4	1200	119
995/37/48	8	2	15	4	1200	52
107/05/48	8	3	16	4	1180	57
107/06/48	8	4	17	4	1200	36
138/01/48	9	3	17	4	1200	108
138/02/48	9	2.5	16	4	1200	30.5
051/04/54	4	3	13	4	1360	82
897/17/54	1.5	1	9	4	1340	36
848/09/54	2	1.5	10	2	1390	53
897/23/54	2	1	7	3	1340	68.5
190/05/54	4	1.5	14	4	1400	186
811/03/54	5	2	12	4	1400	30.5
173/03/54	5	2.5	12	4	1400	50.5
190/01/54	5	1.5	13	4	1400	50
190/03/54	5	1.5	13	4	1390	106
190/02/54	5	2	14	4	1400	200
007/15/54	7	2	14	4	1360	60
164/02/54	8	3	15	4	1400	53.5
184/01/64	6	3	17	5	1600	78



CONVEYOR DRUMS Made to Order



Don't breakdown when your drum goes down

- Heavy duty solid, slatted or spiral drums
- One day delivery on most drums
- Large selection of used and unused drums
- Large stocks of new and used

Telephone Canning Conveyor For the quickest turnaround

ATTENTION: USERS OF JACKSON®, BAT®, STEELACE® FASTENER USERS

FLEXIBLE STEEL LACING COMPANY LTD., THE MANUFACTURER OF ALL OF THE ABOVE BRANDS HAS RECENTLY CONSOLIDATED ALL OF THOSE BRANDS INTO THE FLEXCO® BRAND OF PRODUCTS.



CANNING CONVEYORS – ARE APPROVED FLEXCO BELT FASTENER SUPPLIERS.

WE ARE NOW STOCKISTS OF THE NEW

FLEXCO 190VP™ BOLT SOLID PLATE FASTENERS

CONTACT BELT DEPARTMENT FOR FURTHER DETAILS

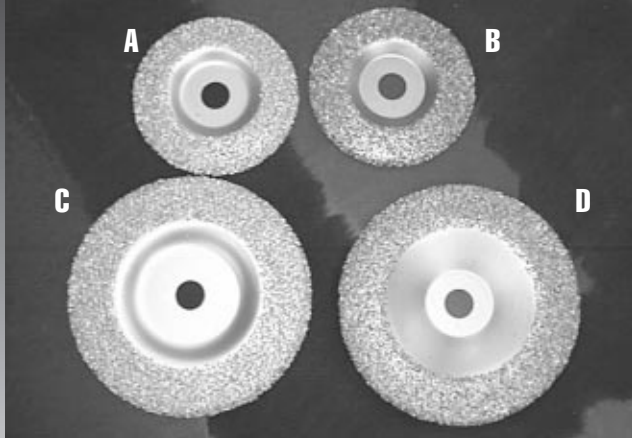
WE WILL BE HAPPY TO ASSIST OR ARRANGE SITE VISITS FOR TRAINING & ADVISE FREE OF CHARGE TO USERS OF ANY OF THE DISCONTINUED BRANDS TO FIND THE PROPER FLEXCO REPLACEMENT.

GIVE US A CALL!



MISCELLANEOUS

SPECIAL OFFER FLAT BUFFING DISCS



- A - 175Ø PATRIOT CARBIDE £67.00**
- B - 175Ø COPPER CARBIDE £50.00**
- C - 125Ø PATRIOT CARBIDE £47.00**
- D - 175Ø COPPER CARBIDE £33.00**

All discs are 16 grit

These prices supersede all previous prices and are correct as 1 Jan 2004

USED GEARBOXES

SHAFT MOUNTED TYPES

FENNER TYPE

- Size D : 3 off x ratio 5:1
- Size E : 8 off x ratio 20:1 2 off x ratio 13:1
- Size F : 7 off x ratio 13:1 7 off x ratio 20:1
- Size G : 3 off x ratio 5:1 15 off x ratio 13:1 15 off x ratio 20:1
- Size H : 6 off x ratio 13:1 9 off x ratio 20:1
- Size S : 1 off x ratio 13:1

LERROY SOMER TYPE

- 1 off x PB 2620 x ratio 20:1 2 off x PB 2420 x ratio 20:1
- 1 off x PB 2520 x ratio 20:1

RENOLD TYPE

- 3 off x SM H6 x ratio 20:1 1 off x SM H5 x ratio 20:1

WORM REDUCTION GEARBOXES

RENOLD TYPE

- 1 off size 8" x ratio 25:1 1 off size 8" x ratio 15:1

CROFT TYPE

- 1 off size 8" x ratio 30:1 1 off size 10" x ratio 30:1

RADICON TYPE

- 1 off size 8" x ratio 30:1 1 off size 10" x ratio 15:1
- 1 off size 10" x ratio 25:1 1 off size 10" x ratio 30:1
- 1 off size 10" x ratio 40:1 1 off size 12" x ratio 15:1
- 1 off size 12" x ratio 20:1 1 off size 12" x ratio 30:1
- 2 off size 12" x ratio 50:1 3 off size 14" x ratio 30:1
- 1 off size 14" x ratio 70:1

DAVID BROWN H SERIES

- 1 off size B225 x ratio 13.96:1 3 off x size B3280 x ratio 21.26:1

A SERIES TYPE

- 1 off size 600 x ratio 30:1 1 off size 600 x ratio 70:1

HOLROYD TYPE

- 1 off size 6" X ratio 60:1

PRICE EITHER 'AS IS' OR RECONDITIONED



SPECIAL OFFER

SLIDELAG PADS AND RETAINERS

Standard stock pads with 10mm diamond rubber in 1800mm (6ft) lengths

ORDERS OF 20 OFF OR MORE PADS

for a special price of £50 per pad (RRP £80)

Double & single retainers to suit would be absolutely **FREE!!**

Promotional offer for this issue only, valid end April 04, while stocks last

CONTACT ENGINEERING SALES NOW - QUOTE REF SPRING-SPO



NEW RUBBER LAGGING

Variety of rubber lagging offered in plain, diamond cut pattern 8mm/10mm.



'SLIDE LAG PADS' and retainers (pads to suit drums dias 10³/₄" to 24" kept in stock)



Selection of lagging 'for cold' vulcanising.



CANNING CONVEYOR BRANCH OUT

UK STOCK HOLDERS • 7 DAY 24 HOUR CALL OUT

LARGE STOCK AVAILABLE • FITTING & VULCANISING SERVICES

Strathclyde Vulcanising Services
- Twechar Strathclyde

Taylor & Sons - Cardiff

Olympic Conveyor Services - Cornwall

RTI Conveyor Services - London



Belt Services

We can offer:

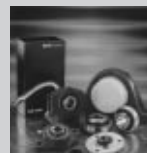
- On site vulcanising
- On site fitting & clipping
- Belt cutting service
- Vulcanised endless belts
- Custom-made belts to your requirements



LARGE SELECTION IN STOCK



Used Gearboxes, Shaft Mounted Reduction Boxes, Electric Motors, Secondhand & New Conveyor Drums and Bearings.



Contact our sales dept for your individual requirements



NEW IDLERS

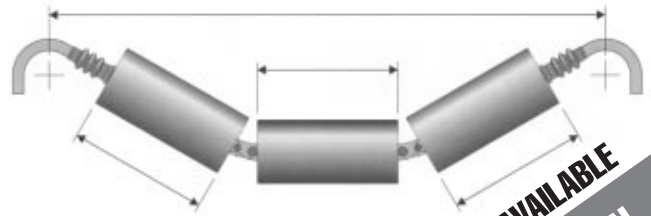
SPECIAL OFFER

FRAMES - NEW • ROLLERS - UNUSED

375 SETS - 900/1000 BELT WIDTH
SIDE SUPPORTED.
AS NEW £32 PER SET

JUST IN

SPRUNG SUSPENDED IDLER



600mm (24") SETS
750mm (30") SETS
CONTACT OUR ROLLER
SALES FOR DETAILS

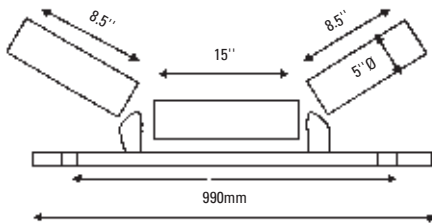
**BEST PRICE AVAILABLE
PROMOTION**

USED IDLERS

Anderson Mavor IDLER

£28
PER SET
SECONDHAND

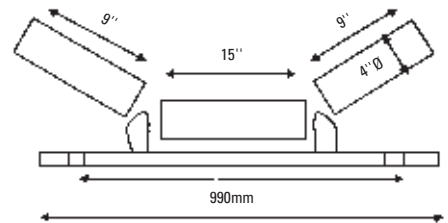
750mm belt width
30° - 5" dia
40 sets available



Anderson Mavor IDLER

£28
PER SET
SECONDHAND

750mm belt width
45° - 4" dia
50 sets available



SAFETY FIRST! with Canning

FIELD PROVEN TOOLS HELP BOOST PRODUCTIVITY AND SAFEGUARD WORKER HEALTH

Far-Pul HD® Belt Clamps lock belts securely in place.

Avoid the problems and potential dangers associated with homemade devices such as c-clamps, lumber and chains. Instead, do the job right with belt clamps specially engineered for heavy-duty conveyor belt maintenance applications.



The 840 Series Belt Cutter delivers straighter, faster cuts with unsurpassed safety.

Utility knives simply can't provide the same level of safety, speed and accuracy when cutting belts. The 840 Series Belt Cutter eliminates the danger of accidental injury that may occur with utility or pocket knives.

CONTACT BELT DEPARTMENT FOR FURTHER DETAILS

USED EQUIPMENT

2 off used 750mm x 2.1 mtrs Flat Belt

complete with 7.5kw electric drive - motor/Fenner shaft, mounted gearbox, impact rollers, flanged receiving hopper

Ref-PL9497 As is £1800
.....complete with sidewall belt £2,300 each



Washing drum including drive unit

Length 6000mm
Diameter 2200mm
with rubber on the inside

Ref-051
£13,500 Ex Site



1 off used 800mm x 5 mtrs Fyson GB Feeders

with 2.74m wide hopper. Petter PH1 (8hp) diesel drive, pneumatic tyre wheels, square to round chute, beltcovers drawbar.

Ref-PL6170 £3,200 each

1 off used 600mm Jib head drive

single drum drive
complete with 5.5kw electric drive

Ref-PL8080 £3,000

~~1~~ NOW 3 off (choice) used 600mm Tail units

complete with drum, bearings, feedboot screw tension

Ref-PL8081/8082/8083 £1600 each

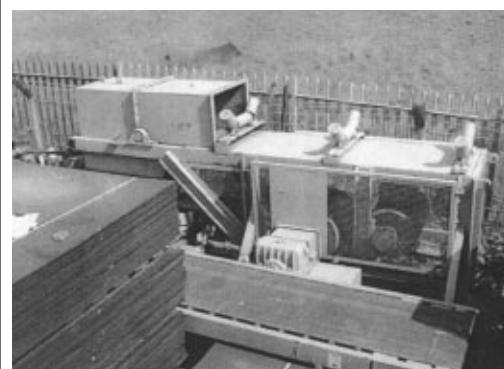


1 off used 1050mm x 102mtrs Complete Field Conveyor

complete with 30kw drive, loop take-up, jib discharge unit & plain belt

Designed to handle up to 600tph of - 200mm material

Ref-PL6632 £20,000



1 off used 600mm Jib head Drive

single drum 600mm dia drive lagged, complete with 22kw electric drive, motor /worm box /fluid coupling

Ref-PL7082 £4,800



ALSO AVAILABLE

New / Part New / Used & Secondhand

 600/750/900/1050mm JIB HEAD DRIVE UNITS

 LOOP TAKE UP UNITS

 TAIL UNITS

 INTERMEDIATE SECTIONS/BAYS COMPLETE



CRUSHERS

AVAILABLE TO VIEW IN FRANCE

- 1 off Mobile 5th wheel coupling 3ft pegson hydraulic cone crusher complete with 10' x 4' - 2 deck screen
Offers ex site France
- 1off Kue Ken 120S Base Jaw Crusher with motor (1992)
£30,000 ex site
- 1off Kue Ken 30 x 12 Base Jaw Crusher with motor (refurbished & painted) **£9,500 ex site**
- 2off Pegson 900 Auto Cone Crushers with motors & all equipment (1992 & 1996 models) **Offers ex site France**
- 1off Nordberg 4' std Cone Crusher, fully hydraulic all complete **£32,500 ex site**

CONTACT US WITH YOUR CRUSHER/SCREEN REQUIREMENTS



USED EQUIPMENT



**1 off used
600mm x
40mtrs
complete**

troughed belt complete with walkway one side, 11kw electric drive, support legs and access ladder. No belting (extra)

Ref-PL8084 As is £6,750



**1 off used
600mm x 32mtrs
complete**

troughed belt complete with walkway oneside comprising 8m head section with 7.5kw electric drive, 12m intermediate and 12m tail sections. No belting (extra)

Ref-PL9495
As is £5,500



**1 off used
900mm Drive
Head End
Unit
Complete**

with 22kw electric drive, drums, bearings, chute and walkway platform round

Ref-PL9494 As is £3,300

750 WIDE TROUGHED CONVEYOR

Ref-PL9975
£6,500 Ex Site

6 metres Long c/w 75kw motor and Croft No 6 g/box, belt and skirts. Excellent condition



**2 off used
750mm x
11mtrs Long
Intermediate
Lattice
Sections**

complete with walkway down one side and idlers. No belt.

Ref-PL7877A/B As is £1,500 each



**1 off used
800mm
x 15mtrs
Fyson GB
Shiploader/
Stockpiler**

complete with PH2 diesel drive, 800mm chevron belt, hand pump for elevation, removable belt covers full length

Ref-PL6172 £8,000

**1 off used
750mm x 20mtrs Stockpiler**

adjustable height
11kw electric drive, plain belt, tow bar, slewing wheels, feedboot

Ref-PL9514 £13,500

**1 off used Belt Weigher Assembly
to suit 800mm wide belt**



Ref-PL8002 As is £300

USED EQUIPMENT



**1 off unused
900mm x
20mtrs
Stockpiler**

adjustable height
15kw electric
drive, plain belt,
tow bar, steering
wheels, feedboot

Ref PL6631 **£15,000**



HEWITT ROBINS SCREEN

3500 X 1400 one deck with rubber mashing including motor & springs

Ref-689

£3,200 Ex Site

cc FOR SALE

ONE FULLY RE-CONDITIONED CRUSHER

"BJD" FLEXTTOOTH CRUSHER 20" x 16" YEAR 1987
18.5 KW DRIVE MOTOR . VEE BELT DRIVE
ALL ON MOUNTING FRAME READY TO GO!

Ref PL9978/9981 **£7,500 EX WORKS**



**LIEBHERR
CONCRETE MIXER**

Ref-023

£5,500 Ex Site

DM Ø
Motor

3100mm x 1000mm
37kw



**3 JAW
CRUSHERS**

Ref 692A One 400 x 250 Krupp DT **£2,800 Ex site**

Ref 692B One 600 X 300 hsm HT **£4.650 Ex site**

Ref 692C One 600 x 400 Kleeman ST **£5,400 Ex site**

FEEDER

Ref 692D One feeder with vibrating
motors 2000 x 1000mm **£2,250 Ex site**



**HAYER AND
BOECKER SCREEN**

Ref-196

£2,900 Ex Site

Type 2 Deck
Size 3000 x 1000mm
With motor & springs



HEIN LEHMANN SCREEN

Used for fine screening

Special screen for sticky material
Size 5000 x 2000mm
Single deck
With chassis and conveyor under screen
BW 2000mm x 6500 long

Ref-432

REDUCED TO £17,000 Ex Site



SIEBTECHNIK SCREEN

Ref-500

REDUCED TO £12,000 Ex Site

Type 2 1/2 Deck
Size 6000 x 2000mm
Motor 30kw
with chassis



HAYER NIAGARA FEEDER WITH ONE SCREEN DECK

For screening fine powder

Ref- 685

£3,800 Ex Site

Feeder 1250 x 500mm
Screen 2000 x 800mm



60 METRE CONVEYOR CONSTRUCTION TO SUIT 800mm BELT

Ref-321

£175/metre Ex Site

3 x 20 metre length made off tube diameter 60mm. 1200mm high off construction with head and tail unit, no rolls, no belt. BB 800mm width.



KLEEMAN DOUBLE TOGGLE CRUSHER

Ref-438

REDUCED TO £9,600 Ex Site

Size 600 x 400
with spare plates new complete with motor



HOPPERS

9 off available

Ref-304

REDUCED TO £2,000 each Ex Site

6 with Vibrating Tray Feeders
Size 2500mm x 2700mm
3 with Small Conveyor
Size 3000 x 3000mm

cc FOR SALE

**Complete Used Conveyors
NOW AVAILABLE (Ex-Quarry Site)**



All troughed belt conveyors, lattice type construction with walkway on side
- no supports or belt. (would be extra)
- all complete, in good order.



As is EX-WORKS

- | | |
|---------------------|-------------------|
| 1-22 metres x 600mm | £4,500 |
| 1-20 metres x 750mm | £5,000 |
| 1-25 metres x 750mm | £5,500 |
| 2-40 metres x 750mm | £8000 each |

ALL CAN BE VIEWED AT OUR WORKS



FINLAY
TYPE 393, used only 3,800 hrs

YEAR 1993

Ref-730
£19,300 Ex Site

**DO YOU HAVE ANY USED
EQUIPMENT FOR SALE?**

**Contact Ian Bennett/Andrew Canning
Telephone 01909 486166**



HEIN LEHMANN SCREEN

Complete with chassis & conveyor

Type	Liwell LF
Size	Length 5000mm Width 2000mm

Ref-SP/18

VERY COMPETITIVELY PRICED £26,800 Ex Site



**REMAX JAW CRUSHER MOBILE UNIT
1000 x 700 DT (Double Toggle)**

Ref-580
£84,500 Ex Site

With Hopper, Crusher, diesel electric, conveyor belt (width 1000mm), magnetic belt (overband) mobile on chains.



ALLIS MINERAL-SVEDALA SCREEN

Ref-SP/13

REDUCED TO £9,600 Ex Site

Type	Lowhead screen
	4' x 20'
Serie Nr	UKO 3954 Double deck
Power	Allis Mineral 5-3 mechanism 22kw Brook-Crompton



SVEDALA SCREEN DRUM

Ref-669

£17,000 Ex Site

Double deck diameter 2000mm length 4250mm with chassis and belt under screen 4500 x BB 14000 with hopper



ALLMINERAAL BY SVEDALA JIG/BLOWER/SCREEN

Ref-SP/17

£32,250 Ex Site

Type	Alljig 2500 three deck
Size	3000 x 1200mm
Deck	Stainless Nr.1 Dia 12mm Nr.2 Dia 12mm Nr.3 Dia 20mm



HEAD DRUMS WITH RUBBER LAGGING C/W BEARINGS LIKE NEW

950 x 500 - 950 x 600
Wide selection in stock. Also tail and snub drums available.

Ref-694/PL (various)

CONTACT DRUM SALES FOR LIST/REQUIREMENTS

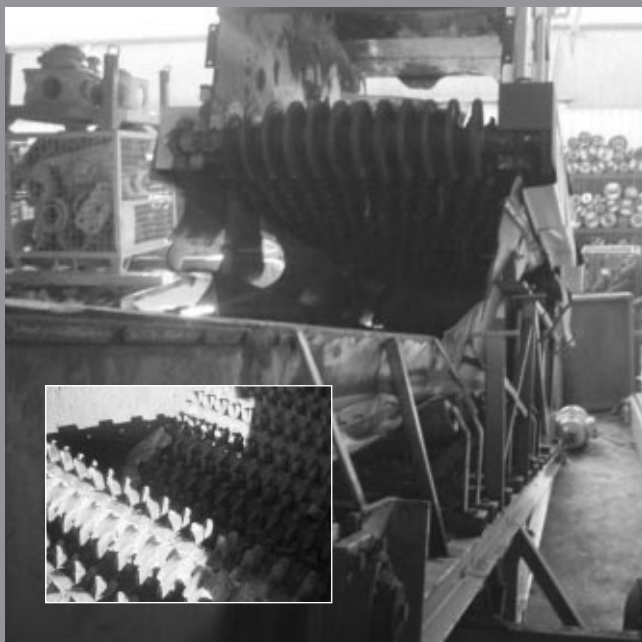


ALLIS-CHALMERS SCREEN 2 off available

Ref-SP/15

£8,850 Ex Site

Type	Dewatering screen
Screen surface	6' x 16'
Power Motor	30kw
Screening plate	± 65 x 1mm stainless



BRAN BACKER RUBBER STAR SCREEN

Ref-621/625
£19,500 Ex Site

Length 4000mm
 Width 1250mm
 With mobile length 7200mm belt width 1200mm



ALLIS MINERAL-SVEDALA SCREEN

Ref-SP/14
REDUCED TO £14,500 Ex Site

Type Lowhead vibrating screen 7' x 20'
 Serie Nr UKO 3955 Double deck
 Power Allis Mineral 5-3 mechanism
 45kw VEM motor

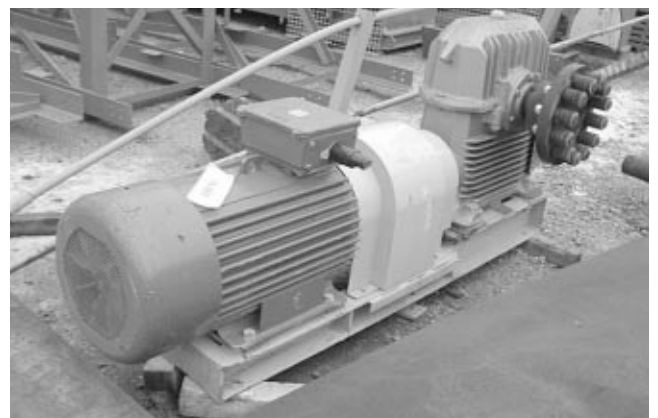


SHIP LOADING CONVEYOR

VERY GOOD CONDITION

Ref-545
£5,400 Ex Site

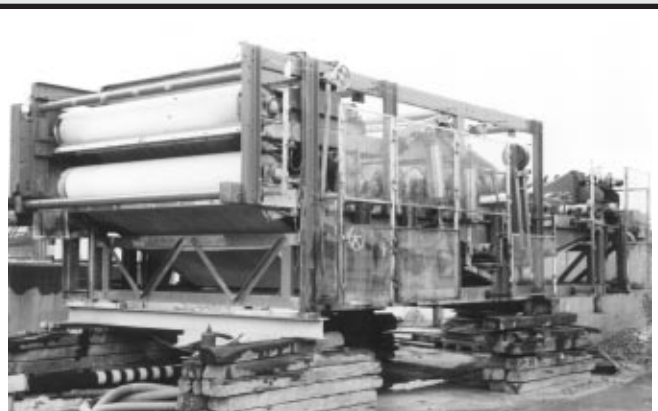
Construction galvanising UNP 180mm
 Belt 1000mm chevron 16mm high cleats
 Conveyor Ca. 10,000mm long



75KW DRIVE

Ref-PL9950
£2,500 EXCELLENT CONDITION

75kw motor 1440 rpm
 Fluid coupling
 Radicon CU12 20:1
 Low speed flex pin coupling



PARNABY CYCLONES INTERNATIONAL LTD FILTER PRESS

Ref-SP/19
SPECIAL PRICE
REDUCED TO £52,750 Ex Site

Type Title arrangement of 3 metre Mark III press
 Capacity 39t/h (dry material)
 Band Upper 13480mm Lower 21380mm
 Motorpower 75kw
 complete with 2 spare belts



COMPLETE CONVEYOR

500 wide x 12 metre long
890 over structure RSC
c/w troughed idlers
500mm belt
c/w Brook Compton
motor 5.5kw, 1440 rpm
SMSR TD4 Fenner
Head drum 406 diameter
Spiral tail drum
Belt covers

READY TO GO !!

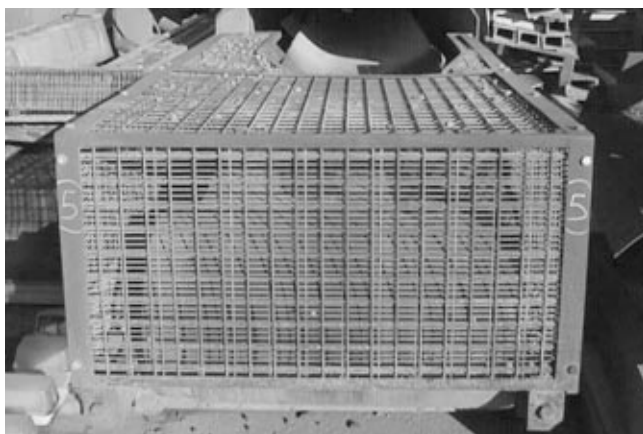
Ref-PL10442
£1,750



HOPPER/LOCKER FEEDER

1 freestanding, 9ft square opening
with 2ft high extension plate. 10ft
deep o/a ht 15ft. c/w Locker tray
feeder

Ref-PL10438
£2,100



COMPLETE CONVEYOR

750mm wide x 12 metre long. c/w T/lders,
belt covers, Fenner drive SMSR F/Box 13-1,
Brook Compton motor 4kw
'V' belt drive 1080 over frame RSC
c/w plain belt

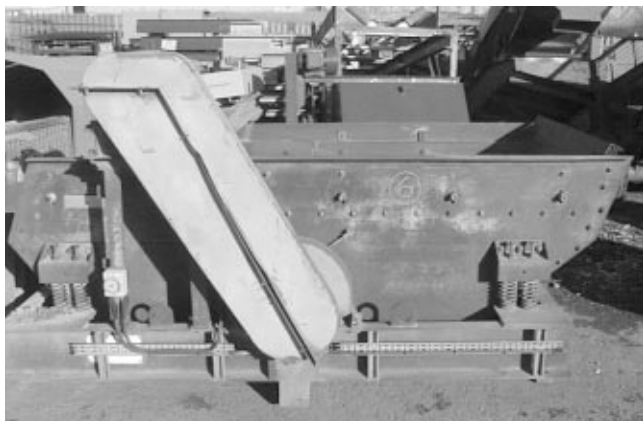
Ref-PL10442 **£1,750**



S/H 7.5KW DRIVE COMP

c/w Drive Drum 550 diameter x 800
Lagged. 7.5kw motor & SMSR 'F' 20
Fenner

Ref-PL10046
£900



NIAGARA SCREEN

8ft x 4ft type 3E8
Compton motor 4kw, c/w
mounting frame, stools, vibrating
mounts and mesh screen.

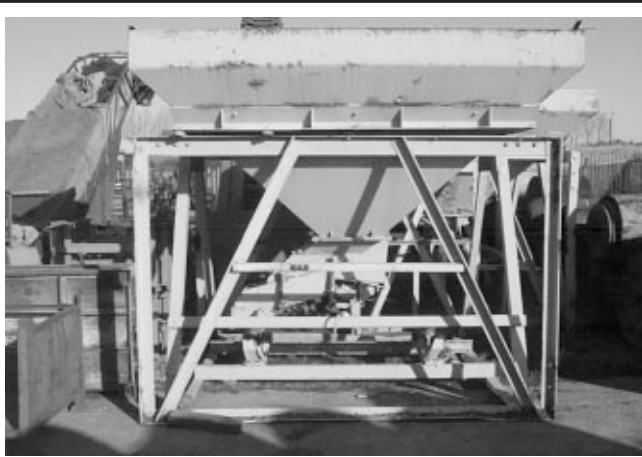
Ref-PL10443
£2,000 ALL IN GOOD CONDITION



SCREW CONVEYOR

2.8 mtrs x 150mm
c/w drive

Ref-PL10274
£300



S/H 9FT SQ HOPPER (2 OFF)

Ref-PL10184/10185
£900 EACH

c/w manual gate feed sill



TROUGHED CONVEYOR BELT

600mm wide
 4.1 metres long
 Pressed steel construction
 c/w electric drive no belt

Ref-PL10275
£650



TROUGHED CONVEYOR

500mm wide
 13.5 metres long
 c/w electric drive
 No belt

Ref-PL10276
£900

COMPLETE USED CONVEYOR

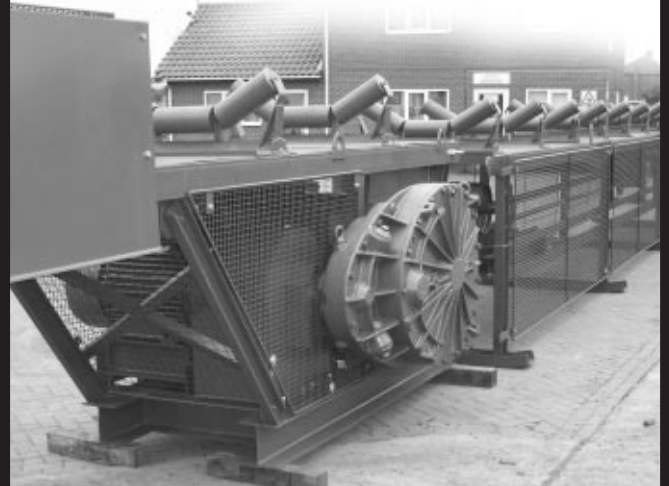
Ref-PL10439

1-750mm x 21 metres in 2 sections c/w rollers, RSC frame
 Head section c/w 4kw g/motor drive
 406 head and brgs. Tail section c/w tail drum, brgs, feedboot
£2,100 without belt £2,500 with plain used belt

QUICK JOB FOR RMC - TEMPLE QUARRY SCOTLAND



Canning Conveyors have just supplied to RMC - Temple Quarry, Scotland a fully reconditioned 55kw double drum drive, complete with new 10mtr loop take up unit - fully supplied with conveyor stools and new flexing rollers, and 1050Mtr x 750mm EP500/3 5+1.5. All from stock, from order delivered to site in just 10 days.



FULLY RECONDITIONED DRIVES & LOOPS AVAILABLE EX-STOCK

**COMPLETE 12 MONTHS FULL WARRANTY
 FULLY GUARDED TO BS 7300**

- 24" Single jib drive, 22kw, c/w fully reconditioned 8mtr loop. **£6,000**
- 30" 75kw, fully reconditioned double drive, c/w 10mtr loop. **£22,000**
- 42" FSW Lion 65, double drum drive, 30kw, c/w loop and tail sections and field conveyor. 600 tph capability, previously used on Ladybower reservoir. Fantastic quality. **£20,000**
- PL9950 used electrical drive mounted on baseplates, comprising; 75kw brook motor 1470rpm AD250, via fluid coupling to; CNU12 Radicon gearbox. All in excellent condition **£2,500**
- 30" Meco loop take up. 2 x 8 ft bays, with hand winch. **£POA**
- 36" Meco double drum drive, c/w 2 x 20" dia. lagged drums motor and CU17" Radicon gearbox. **£POA**
- Meco double drum drive unit and jib section, c/w 2 drive drums each having 30kw/12" Radicon gearbox electric drive. **£POA**
- 30" single Meco jib drive unit, c/w 40 horsepower motor & 10" Radicon gearbox. **£POA**
- 36" Meco loop take up, 3 x 8 ft bays - 24 ft long **£POA**
- PL6106 used 90kw Fletcher Langley, motor frame DW280m, 1420rpm **£POA**
- PL6291 used 55kw GEC motor, D250, 1480rpm **£POA**
- PL6292/3 used 14" worm boxes, Renold, 52:7 R (2 Off) **£POA**
- PL6296 used 17" D Brown worm box, 50:1 R **£POA**
- 280 - 750mm wind loop covers, (galvanised) **£POA**
- 160 - 600mm wind loop covers, (galvanised) **£POA**

FIELD CONVEYOR STRUCTURE NEW

- 1000mtr x 750mm wide field conveyor structure, available ex-stock c/w flexing sets and return rollers. **£POA**

USED

- 1000mtr x 750mm wide field conveyor structure, available ex-stock c/w flexing sets and return rollers **£POA**
- 1000mtr x 600mm wide field conveyor structure, available ex-stock c/w flexing sets and return rollers **£POA**



CANNING CONVEYOR NOW OFFER ENVIRONMENTAL SERVICES!

Canning Conveyor can now offer a full 'turnkey' service to all our customers, which incorporates CAD design, manufacture, installation and commissioning.

All our work is fully guaranteed and free site surveys are available.....

Dust Suppression

There are several existing methods of controlling dust but many are ineffective, costly and have detrimental effects on plant and machinery.

An effective system for the control of fugitive dust in industry should meet the following objectives.

- Must be efficient to meet Health & Safety requirements.
- Be practical and simple in operation.
- Have low initial cost.
- Have low operating costs.
- No adverse effects on product quality or plant and machinery should be created.

The Ultrasonic Atomising System has therefore been developed in order to meet these requirements and overcome the problems associated with other dust suppression operations.

The Ultrasonic Atomising System is based on research considering a water droplet, from a spray, that is about to impinge on a dust particle.

If the diameter of the droplet is much greater than the dust particle then the dust particle is simply forced away by the airstream lines around the droplet and little or no contact occurs.

If, on the other hand, the water droplet is of a comparable size to the dust particle then contact occurs as the dust particle attempts to follow the airstream line.

The probability of impaction increases as the size of the water spray droplet decreases.

This explains why conventional hydraulic water sprays are not effective on respirable dust. With typical diameters of 200-600 microns the droplets are much larger than the dusts they are attempting to suppress.

The Ultrasonic Atomising System generates droplets averaging 10 micron in size and is capable of suppressing sub-micron dust particles.

In addition to this particle size theory, the results of additional research indicate there is another significant phenomenon that occurs when Ultrasonic Atomising Systems are applied to dust suppression.

The effect can be compared to an electrostatic precipitator in which dust particles are charged and then collected on plates of opposite charge. It was found that dust particles generally carry certain negative potential depending on the nature of the dust and the ambient conditions.

Water droplets produced by the nozzles carry a charge that is strongly positive in relation to the dust particles.

The result is that the probability of collision between a droplet and particle is greatly increased from the spatial probability, implying the need for fewer water droplets to ensure the desired efficiency.

Thus, a nozzle generating a dense fog of 1-10 micron size droplets can be used to envelop and smother dust particles at their source and prevent them from becoming airborne.

Design

The Ultrasonic Atomising Nozzle takes the form of a whistle using compressed air which accelerates through a converge section and expands to a diverge section into a resonator chamber. This produces a powerful sonic shockwave.

Water or other liquids delivered to this sonic area are shattered into droplets. Droplets produced by sonic atomisation are small and relatively uniform in size, in the order of 10 micron, with a low mass and low forward velocity.

The nozzles have a large liquid port which are not prone to blockage.

Application

In practice, the Ultrasonic Atomising System can be utilised in many different industries to provide effective dust suppression.

Wherever there is mechanical handling of any product the system can be incorporated to supply substantial environmental benefits to the process operator.

Examples include conveyor transfer points, crushing or screening equipment and loading/unloading facilities.

Applications where these benefits are of most importance are:-

- The Recycling Industry.
- Foundries.
- Quarries and Mines.
- Incinerators.
- The Woodworking Industry.

Several nozzles at specific locations throughout the plant, individually controlled from a separate control panel, can be used to obtain optimum conditions.

The installation of the Ultrasonic Atomising System is simple and operation is easy.

The system requires only a compressed air and water supply and in many cases a single nozzle may be sufficient.

Other applications include:-

- Humidification.

Particularly in agricultural industries for greenhouses and propagation areas.

- Gas Cooling.

For example in cooling flue gases from furnaces and cement kilns etc.

- Chemical Injection.
- Quenching & Moisturisation.

Advantages

The advantages of using Ultrasonic Atomising Systems for dust suppression can therefore be summarised as follows:-

- Reduced Health Hazards.
- Decrease in Atmospheric Pollution.
- Improved Working Conditions.
- Efficient Operation With Minimum Use of Water Thus Not Saturating the Product or Plant and Equipment.

Our Ultrasonic Dust Suppression Systems utilise water and compressed air to produce micron sized water droplets from a uniquely designed spray nozzle. The importance of the micron sized water droplet is that it is the same relative size as the respirable dust particle and it therefore attracts the dust and effectively removes it from the ambient air. No free water is produced, which is of particular importance in areas where the product is intolerant to water content.

Larger spray nozzles simply move the dust particles without impacting and create large volumes of free water over the site. Specific applications can be within the roof of a building to suppress dust over the total volume, e.g within a waste transfer station, or at a specific point of dust creation, e.g a conveyor transfer point or product loading hopper.

Fume & Dust Extraction

Complete air extraction systems can be supplied and installed to eliminate and control workplace fume and dust emissions.

Extraction points can cover a number of areas including:-

- Above specific working areas
- At material loading points / bays
- Within workshops or processing stations

Systems usually incorporate wet or dry filters to regulate emissions to atmosphere within legislative requirements. Fire or explosion relief is built in as required. One specific example is on a skull lancing plant where the fume and dust created from the oxygen cutting of the bottom skulls used in steel production is extracted from within a mobile hood before being passed firstly through a dust and spark arrester and onto a cartridge filter. The total system ensures the protection of the operator and clean air emissions to atmosphere.

Sound Attenuation

Designed to provide effective noise level reduction from high emitting sources throughout the process plant. Manufactured and installed to meet Health & Safety requirements and to protect the personnel in the vicinity of the noise emitting equipment.

Sound attenuation systems can be supplied in three main areas:-

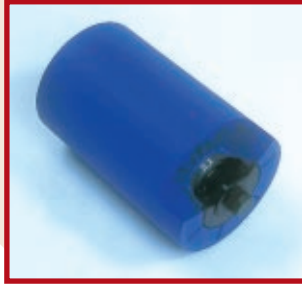
- Acoustic Booths – To contain noise emissions at source
- Acoustic Barriers – To surround a noise source in order to prevent sound travelling larger distances
- Acoustic Enclosures – To protect personnel inside the enclosure from a noise source outside e.g. Picking Stations

HIGH DENSITY POLYMER ROLLERS

Unique in Europe
only by
Canning Conveyor



- Manufactured from HDP ejection
- 8mm wall thickness
- Impact resistant
- Acid resistant
- Heavy Duty high impact performance
- Waterproof and anti-dust patented triple labyrinth seals
- Lightweight - 55% lighter than traditional steel roller
- Low maintenance cost
- Compliant with ISO standards



- Available for variable / fixed angle troughing sets and return idlers
- Costs less than steel
- Ex-stock of standard items
- Specials made to order
- Specification
 - Tube - 102mm dia x 8mm wall thickness
 - 127mm dia x 8mm wall thickness
 - Shaft - Bright drawn mild steel

TRIED & TESTED

**CONTACT - SALES
FOR BROCHURE**



CANNING IDLERS



Canning idlers are manufactured to the highest quality standards in the UK, to ensure accuracy finish & long life.

Deep drawn housings & tube to BS6323 part 1 come together on auto-centric, double-ended welding machines to give good balance & trueness which in turn permits high speeds without excessive vibration.

Zinc plated end caps cover a multi-labyrinth sealing arrangement which protects the precision bearing, and to ensure permanent lubrication a rear seal is fitted encapsulating the grease within the bearing area.

Canning supply idlers to any specification including ISO, BS, NBC, CEMA and DIN and a variety of diameters & lengths. With our replacement idler service we can recognise and cater for all types & sizes available on the market today. Shafts are machined for any fitment.

Transomes are manufactured from mild steel and jog welded for accuracy. All types of variable and fixed angle types are available in many belt widths; 2,3,4, & 5 roll sets can be manufactured to your dimensions. If that which you require is not in plant list, please do not hesitate to contact us to discuss your requirements.



CANNING BELT TRACKING DISC

**NEW
PRODUCT**

- To suit 102mm and 127mm dia rollers
- Easy to install
- Ex stock availability
- Fits standard field conveyor flexing sets and return rollers
- Unbeatable prices !!

PROMOTION - SPRING NEWS ISSUE ONLY

We have 50 tracking discs to give out free for trial use
FREE PAIR OF DISCS PER CUSTOMER

CONTACT 'ROLLER SALES' FOR FURTHER DETAILS



GODDARDS QUARRY INVESTS IN POLYMER !

Goddard's Quarry has recently updated an existing conveyor by fitting polymer rollers in parts of their system. Owned by RMC Materials, the quarry is situated at Stoney Middleton in Derbyshire and is a limestone operation with an annual throughput of 250,000 tonnes. The existing system comprises of twelve conveyors, three crushers and five screens which handle crushed stone from 225mm to dust.

Canning Conveyor supplied polymer rollers and strengthened frames to an outside contractor who delivered and fitted the new components at Goddard's Quarry.

High density polymer rollers are relatively new to the industry and provide many advantages in their application. The high quality roller shell is manufactured from high density polymer and provides excellent impact resistance, acid resistance, anti-corrosion and anti-alkali in chemical character. The roller assembly is completed with double cap bearings compliant to ISO standards. Differing from the traditional steel roller the Canning synthetic roller has good impact and instauration. The

strengthened frame offers the synthetic roller the same rigidity as a steel roller. Providing triple bearing protection the seal rings prevent water and dust entering the inside of the roller. Additionally a special catchment groove utilising centrifugal force keeps the inside of the roller dry in all weather conditions. The patented labyrinth seals offer a 45% higher efficiency of preventing water and dust than traditional labyrinths.

Goddard's Quarry have found that the polymer rollers have provided greater efficiency in their operation, due to homogeneous mass, good roundness and minimum rolling factor; there has been a subsequent power saving over time due to the significant reduction in amperage.

An additional benefit to the quarry has been the low maintenance cost of the polymer rollers, guaranteed for two years under normal operation no lubrication is required and they are easy to replace and reduce maintenance time to the minimum.



HUGE SAVINGS FOR AGGREGATE COMPANIES!

Brett Aggregates, RMC and Hanson are all enjoying huge savings after fitting heavy-duty polymer rollers. Having used our polymer rollers for the past 3½ years Quarry Managers commented that they were easier to handle and long lasting!

CANNING SUPPLY CONVEYOR SYSTEM FOR BRICK BUSINESS



Canning Conveyor has recently supplied a set of conveyors to the Brick Business in Horsham, West Sussex. The company process 140,000 tonnes of clay annually; from this they produce 55 million soft mud (stock bricks) which are mainly supplied to national house builders, builder's merchants and brick factors. The contract called for the design, installation and supply of three conveyors to move 'as dug' clay from feed to stockpile.

The material is fed into the system by loading shovel into an existing hopper/belt feeder conveyor onto a heavy duty tail end loading section of a 750mm wide x 27m nominal drum centres troughed belt reconditioned ground conveyor designed to receive up to 100 tonnes/hr and to transport material horizontally at ground level. Discharging at the drive end on to a 750mm wide x 179m long new field conveyor again fitted with heavy duty tail end loading section. This supplies the feed onto a third reconditioned 750mm wide x 116m drum centres troughed belt conveyor designed to receive material at ground level and to elevate up to a height of 8m; material then runs horizontally at high level and discharges to deposit a stockpile at ground level into an existing stock bay.



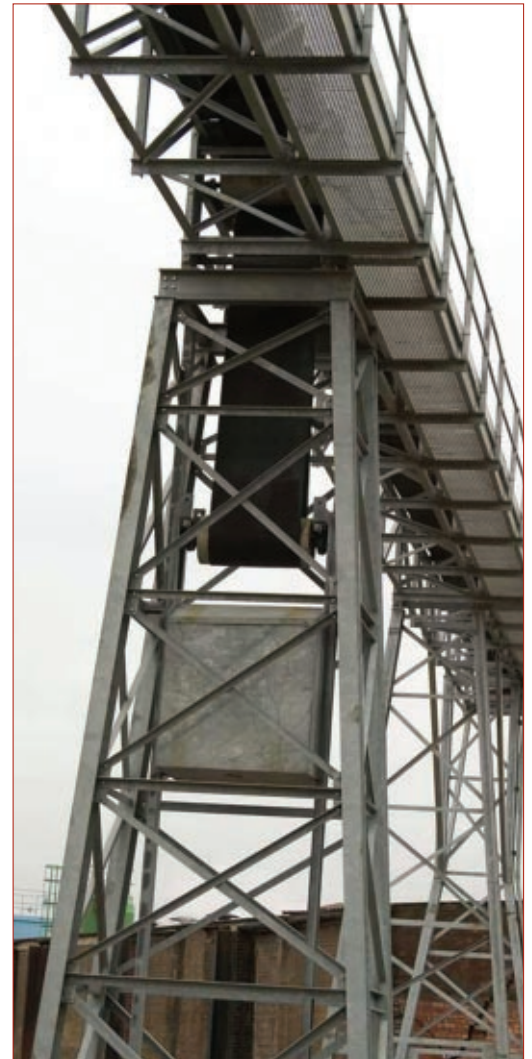
CONVEYORS DURING INSTALLATION

The general specification called for all conveyor equipment to be supplied from fully refurbished components where available, or new if not. All motors supplied were weather proof with class "F" insulation protected to IP55 and were suitable for electric supply of 415 volt 3 phase 50hz. Drives supplied were through shaft mounted gear units with torque arm and guarded vee rope drive, or direct mounted gear motors.

Drums for the project were machined crowned face steel construction fitted to bright steel shafts, drive drums were supplied complete with 10mm thick chevron rubber lagging. All carrying idlers supplied were 102mm diameter multi-trough at 1.25m pitch on lattice sections and 1.5m pitch on ground conveyor section; return idlers were 102mm diameter parallel at 3m maximum pitch.

Belting supplied by Canning was CannoFlex EP315/3 with 3mm + 1.5mm rubber covers; this was vulcanise jointed to length on site.

The system was designed utilising fabricated steel inverted 'A' frame with transverse steel support; the frame utilises fabricated lattice steel construction with adequate cross and diagonal wind bracing all suitably welded and bolted with section joints plated for extra rigidity. All lattice frame gantry sections were fitted with a 750mm wide walkway to one side only and around head end. Canning also completed full site installation and commissioning of the equipment.



Canning Conveyor

Canning Conveyor Co. Ltd.

Sandy Lane Industrial Estate, Worksop, Nottinghamshire S80 1TN Telephone 01909 486166 Facsimile 01909 500638